

# EFS 01

- Stainless Steel Footswitch
- Long lasting and reliable



## Cover Options

- |    |                        |          |
|----|------------------------|----------|
| 1. | Tread black (Standard) |          |
| 2. | Cover black            | RAL 9017 |
| 3. | Cover lightgrey        | RAL 7035 |
| 4. | Cover graphite grey    | RAL7024  |
| 5. | Cover blue             | RAL 5017 |
| 6. | Cover green            | RAL 6024 |
| 7. | Cover yellow           | RAL 1023 |
| 8. | Cover red              | RAL 3020 |
| A. | Customized             |          |

## Body Colour

1. Stainless Steel
2. RAL 7035
3. RAL 9005
- A. Customized

## Norms

- A. Customized
- Z. No Norm

**EFS01.**

## Switching Action

1. S.P.S.T. - N/O, 0,1 A / 24 VDC
2. D.P.S.T. - N/O, 0,1 A / 24 VDC
3. D.P.S.T. - N/O, 0,1 A / 24 VDC  
2 Steps (staggered)
4. S.P.S.T. - N/O, 3A / 24 VDC
5. S.P.D.T. - C/O 3A / 24 VDC
- A. Customized

## Protection

1. IP X2
2. IP X7
- A. Customized

## Cordset

1. 2m PVC, Grey 2 x 0,34 mm<sup>2</sup>
2. 2m PVC, Grey 3 x 0,34 mm<sup>2</sup>
3. 2m PVC, Grey 4 X 0,34 mm<sup>2</sup>
- A. Customized

## Accessories

- |                                    | <b>Part-No.</b> |
|------------------------------------|-----------------|
| 1. Anti slip pad                   | 1.20C.0025      |
| 2. Loading plate and anti slip pad | 4.69C.0002      |
| 3. Panel small                     | 4.69C.0004      |
| 4. Panel large                     | 4.69C.0005      |
| 5. Guard                           | 4.69C.0001      |
| A. Customized                      |                 |
| Z. No accessories                  |                 |



# EFS 01- RS232

- Footswitch for RS 232 Interface
- Different PIN assignment



## Body Colour

- 1. Stainless Steel
- 2. RAL 7035
- 3. RAL 9005
- A. Customized

## Cover Options

- 1. Tread black (Standard)
- 2. Cover black RAL 9017
- 3. Cover lightgrey RAL 7035
- 4. Cover graphite grey RAL 7024
- 5. Cover blue RAL 5017
- 6. Cover green RAL 6024
- 7. Cover yellow RAL 1023
- 8. Cover red RAL 3020
- A. Customized

## Norms

- A. Customized
- Z. No Norm

EFS01.RS232.

## Switching Action

- 1. S.P.S.T. - N/O, 0,1 A / 24 VDC, Pin 7 + 8
- 2. S.P.S.T. - N/O, 0,1 A / 24 VDC, Pin 4 + 6
- 5. S.P.D.T. - C/O 3A / 24 VDC, Pin 3, 4 + 8
- A. Customized

## Protection

- 1. IP X2
- 2. IP X7
- A. Customized

## Cable with 9 Pin

### SUB D socket

- 1. 5m
- 2. 10m
- A. Customized

## Accessories

### Part-No.

- 1. Anti slip pad 1.20C.0025
- 2. Loading plate and anti slip pad 4.69C.0002
- 3. Panel small 4.69C.0004
- 4. Panel large 4.69C.0005
- 5. Guard 4.69C.0001
- A. Customized
- Z. No accessories



# KFS 03

- Footswitch made of Polyamid GF
- Light-duty switch, rugged design
- Guard available



## Norms

- A. Customized
- Z. No Norm

## Base Option

1. Black RAL 9017
  2. Grey RAL 7035
  3. Black with PG 7 gland
  4. Grey with PG 7 gland
- A. Customized

## Cover Option

- |    |                     |          |
|----|---------------------|----------|
| 1. | Cover black         | RAL 9017 |
| 2. | Cover graphite grey | RAL 7024 |
| 3. | Cover lightgrey     | RAL 7035 |
| 4. | Cover blue          | RAL 5017 |
| 5. | Cover green         | RAL 6024 |
| 6. | Cover yellow        | RAL 1023 |
| 7. | Cover red           | RAL 3020 |
| A. | Customized          |          |

KFS03.

## Switching Action

- |    |                 |                |
|----|-----------------|----------------|
| 1. | S.P.S.T. - N/O, | 0,1 A / 24 VDC |
| 2. | S.P.D.T. - C/O, | 0,1 A / 24 VDC |
| 3. | S.P.S.T. - N/O, | 3A / 24 VDC    |
| 4. | S.P.D.T. - C/O, | 3A / 24 VDC    |
| 5. | D.P.S.T. - N/O, | 0,1 A / 24 VDC |
| 6. | D.P.S.T. - N/O, | 3A / 24 VDC    |
| 7. | D.P.S.T. - N/O, | 0,1 A / 24 VDC |
- 2 Steps (staggered)
  - A. Customized

## Protection

1. IP X2
  2. IP X7
- A. Customized

## Cordset

1. 2m PVC, Grey, 2 x 0,34 mm<sup>2</sup>
  2. 2m UL; Black (LIYY) 4x 0,34 mm<sup>2</sup>
- A. Customized

## Accessories

## Part-No.

- |    |                                 |            |
|----|---------------------------------|------------|
| 1. | Panel large                     | 4.69C.0005 |
| 2. | Guard                           | 4.69C.0001 |
| 3. | Loading plate and anti slip pad | 4.69C.0015 |
| A. | Customized                      |            |
| Z. | No accessories                  |            |



# KFS 03-RS232

- Footswitch made of Polyamid GF
- Different pin assignments



## Norms

- A. Customized
- Z. No Norm

## Base Option

1. Black RAL 9017
  2. Grey RAL 7035
  3. Black with PG 7 gland
  4. Grey with PG 7 gland
- A. Customized

## Cover Option

1. Cover black RAL 9017
  2. Cover graphite grey RAL 7024
  3. Cover lightgrey RAL 7035
  4. Cover blue RAL 5017
  5. Cover green RAL 6024
  6. Cover yellow RAL 1023
  7. Cover red RAL 3020
- A. Customized

KFS03.RS232.

## Switching Action

1. S.P.S.T. - N/O, 0,1 A / 24 VDC, Pin 7 + 8
  2. S.P.S.T. - N/O, 0,1 A / 24 VDC, Pin 4 + 6
  3. S.P.D.T. - C/O 0,1A / 24 VDC, Pin 3, 4 + 8
- A. Customized

## Protection

1. IP X2
  2. IP X7
- A. Customized

## Accessories

## Part-No.

1. Panel large 4.69C.0005
  2. Guard 4.69C.0001
  3. Loading plate and anti slip pad 4.69C.0015
- A. Customized
  - Z. No accessories

## Cable with 9 Pin

### SUB D socket

1. 5m
  2. 10m
- A. Customized



# SFS 300

- Steelfootswitch 300 mm width
- Heavyweight, no slip



## Norms

- A. Customized
- Z. No Norm

## Body Colour

- 1. RAL 7035
- A. Customized

## Treat Option

- 1. Treat Black
- A. Customized

**SFS300.** □ □ □ □ □ □ □

## Switching Action

- 1. S.P.S.T. - N/O, 0,1 A / 24 VDC
- 2. D.P.S.T. - N/O, 0,1 A / 24 VDC
- 3. S.P.S.T. - N/O, 3A / 24 VDC
- 4. D.P.S.T. - N/O, 3A / 24 VDC
- A. Customized

## Protection

- 1. IP X2
- 2. IP X7
- A. Customized

## Cordset

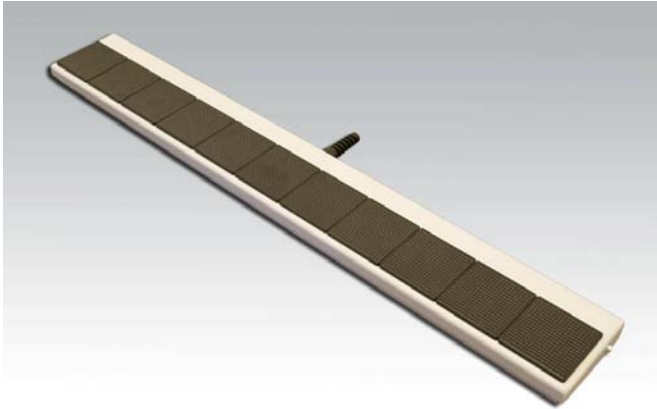
- 1. 2m PVC, Grey 2x0,34 mm<sup>2</sup>
- 2. 2m PVC, Grey 3x0,34 mm<sup>2</sup>
- 3. 2m PVC, Grey 4x0,34 mm<sup>2</sup>
- A. Customized

## Accessories

- 1. Mounting Panel
- A. Customized
- Z. No accessories

## Part-No.

4.69C.0006



# SFS Maxi

- Steel footswitch 500 mm to 750mm wide
- Different length for OEM customers on request



## Norms

- A. Customized
- Z. No Norm

## Body Colour

- 1. RAL 7035
- A. Customized

## Treat Option

- 1. Treat Black
- A. Customized

**SFSMaxi.** □ □ □ □ □ □ □

## Overall width

- 1. 500 mm
- 2. 650 mm
- 3. 750 mm
- A. Customized

## Switching Action

- 1. S.P.S.T. - N/O, 0,1 A / 24 VDC
- 2. D.P.S.T. - N/O, 0,1 A / 24 VDC
- 3. S.P.S.T. - N/O, 3A / 24 VDC
- 4. D.P.S.T. - N/O, 3A / 24 VDC
- A. Customized

## Protection

- 1. IP X2
- 2. IP X7
- A. Customized

## Cordset

- 1. 2m PVC,Grey 2x0,34 mm<sup>2</sup>
- 2. 2m PVC,Grey 3x0,34 mm<sup>2</sup>
- 3. 2m PVC,Grey 4x0,34 mm<sup>2</sup>
- A. Customized



# KMP 02

- Double Pedal Base, Plastic moulded
- Wide choice of combinations



## Norms

- A. Customized
- Z. No Norm

## Panel-Colour

- 1. Black RAL 9017
- 2. Graphitegrey RAL 7024
- 3. Lightgrey RAL 7035
- A. Customized

## Baseplate

- 1. ABS (Standard)
- 2. Stainless Steel
- A. Customized

## Accessories

## Part-No.

- |                   |            |
|-------------------|------------|
| 1. Guard          | 4.69C.0018 |
| 2. Handle bar     | 4.69C.0016 |
| 3. Handle bar     | 4.69C.0017 |
| 4. Handle bar     | 4.69C.0019 |
| 5. Safety bar     | 4.69C.0020 |
| A. Customized     |            |
| Z. No accessories |            |

**KMP02.**

## Switching Action

- 1. S.P.S.T. - N/O, 0,1 A / 24 VDC
- 2. S.P.S.T. - N/O, 3A / 24 VDC
- A. Customized

## Cordset

- 1. 2m, Grey PVC 4x0,34mm<sup>2</sup>
- 2. 3m, Grey PVC 4x0,34mm<sup>2</sup>
- A. Customized

## Protection

- 1. IP X2
- 2. IP X7
- A. Customized

## Cover Option Left & Right

- |                        |          |
|------------------------|----------|
| 1. Cover black         | RAL 9017 |
| 2. Cover graphite grey | RAL 7024 |
| 3. Cover lightgrey     | RAL 7035 |
| 4. Cover blue          | RAL 5017 |
| 5. Cover green         | RAL 6024 |
| 6. Cover yellow        | RAL 1023 |
| 7. Cover red           | RAL 3020 |
| A. Customized          |          |



Sample with top switch

# AMP 03

- Multi footswitch panel,
- Heavy Duty, aluminium panel
- Customized cordsets available



## Norms

- A. Customized
- Z. No Norm

## Panel-colour

1. Black RAL 9017
  2. Graphitegrey RAL 7024
  3. Lightgrey RAL 7035
- A. Customized

## Baseplate

1. ABS (Standard)
  2. Stainless Steel
- A. Customized

## Accessories

## Part-No.

- A. Customized
- Z. No accessories

**AMP03.**

## Switching action

1. S.P.S.T. - N/O, 0,1 A / 24 VDC
2. S.P.S.T. - N/O, 3A / 24 VDC

- A. Customized

## Protection

1. IP X2
  2. IP X7
- A. Customized

## Cordset

1. 2m, PVC Grey 4x0,34mm<sup>2</sup>
  2. 3m, PVC Grey 4x0,34mm<sup>2</sup>
- A. Customized

## Cover option left to right

- |                        |          |
|------------------------|----------|
| 1. Cover black         | RAL 9017 |
| 2. Cover graphite grey | RAL 7024 |
| 3. Cover lightgrey     | RAL 7035 |
| 4. Cover blue          | RAL 5017 |
| 5. Cover green         | RAL 6024 |
| 6. Cover yellow        | RAL 1023 |
| A. Customized          |          |





# AMP 01

- Aluminium-Multipanels
- Up to 4 footswitches and 3 additional switches possible

## Panel option

- |                                 |            |
|---------------------------------|------------|
| 1. Double pedal with side bar   | 4.69C.0007 |
| 2. Double pedal, straight       | 4.69C.0008 |
| 3. Three pedal, curved          | 4.69C.0009 |
| 4. Three pedal, curved,dividers | 4.69C.0010 |
| 5. Four pedal, curved           | 4.69C.0011 |
| A. Customized                   |            |

## Panel colour

- |               |          |
|---------------|----------|
| 1. Lightgrey  | RAL 7035 |
| 2. Black      | RAL 9005 |
| A. Customized |          |

## Switch typ

- |               |
|---------------|
| 1. EFS 01     |
| 2. KFS 03     |
| A. Customized |

**AMP01.**

## Norm

- A. Customized
- Z. No Norm

## Switching action

- |                    |                |
|--------------------|----------------|
| 1. S.P.S.T. - N/O, | 0,1 A / 24 VDC |
| 2. S.P.S.T. - N/O, | 3A / 24 VDC    |
| 3. S.P.D.T. - C/O, | 3A / 24 VDC    |
| A. Customized      |                |

## Cover option left to right

- |                        |          |
|------------------------|----------|
| 1. Cover black         | RAL 9017 |
| 2. Cover graphite grey | RAL 7024 |
| 3. Cover lightgrey     | RAL 7035 |
| 4. Cover blue          | RAL 5017 |
| 5. Cover green         | RAL 6024 |
| 6. Cover yellow        | RAL 1023 |
| 7. Cover red           | RAL 3020 |
| A. Customized          |          |

## Protection

- |               |
|---------------|
| 1. IP X2      |
| 2. IP X7      |
| A. Customized |

## Cordset

- |  |
|--|
| 1. 2m, PVC Grey, 7x0,25mm <sup>2</sup> |
| 2. 2m, PUR Grey, 7x0,25mm <sup>2</sup> |
| A. Kundenspezifisch                    |



# AMP 02

- Aluminium Multipedal Footswitch
- Industrial version, up to 7 switches

## Panel options

1. Double pedal
2. Three pedal
3. Four pedal
4. Five pedal
5. Six pedal
6. Seven pedal

A. Customized

## Guard

Fill in guard position 1 - 7  
A. Customized  
Z. no guard

## Tread option

1. Tread Black
  2. Cover Black
  3. Cover Lightgrey
  4. Cover Blue
  5. Cover Green
  6. Cover Yellow
  7. Cover Red
  8. Cover Grahite grey
- A. Kundenspezifisch

## Panel colour

1. Lightgrey RAL 7035
- A. Customized

## Norm

- A. Customized  
Z. No Norm

## Switching Action

1. S.P.S.T. - N/O, 0,1 A / 24 VDC
  2. D.P.S.T. - N/O, 0,1 A / 24 VDC
  3. D.P.S.T. - N/O, 0,1 A / 24 VDC  
2 Steps (staggered)
  4. S.P.S.T. - N/O, 3A / 24 VDC
  5. S.P.D.T. - C/O 3A / 24 VDC
- A. Customized

## Schutzart

1. IP X2
  2. IP X7
- A. Customized

## Cordset

1. 2m, PUR Grey
  - A. Customized
- The Cordset is depending on the choosen switch options.

**AMP02.**



# KHS 01

- Plastic-handcontrol with cordset
- Assembled to customers specifications

## Norms

- A. Customized
- Z. No Norm

## Body colour

- 1. Black
- 2. Grey
- A. Customized

## Accessories

- | Accessories       | Part-No    |
|-------------------|------------|
| 1. Holder         | 4.69C.0012 |
| 2. Belt clip      | 4.69C.0013 |
| 3. Holding clamp  | 4.69C.0014 |
| A. Customized     |            |
| Z. No Accessories |            |

**KHS01.**

## Switching action

- 1. 1 x S.P.S.T. - N/O, 0,1 A / 24 VDC
- 2. 2 x S.P.S.T. - N/O, 0,1 A / 24 VDC
- 3. 3 x S.P.S.T. - N/O, 0,1 A / 24 VDC
- 4. 4 x S.P.S.T. - N/O, 0,1 A / 24 VDC
- A. Customized

## Protection

- 1. IP X2
- 2. IP X7
- 3. IP X8
- A. Customized

## Cordset

- 1. Spiralcable, PUR black  
500 - 1200 mm
- A. Customized



# KHS 01- RS232

- Plastic handcontrol for RS 232 Interface
- Different pin assignments



## Norms

- A. Customized
- Z. No Norm

## Body colour

- 1. Black
- 2. Grey
- A. Customized

## Accessories

	Part-No
1. Holder	4.69C.0012
2. Belt clip	4.69C.0013
3. Holding clamp	4.69C.0014
A. Customized	
Z. No Accessories	

**KHS01.RS232.**

## Switching action

- 1. 1 x S.P.S.T. - N/O, Pin 7 + 8
- 2. 1 x S.P.S.T. - N/O, Pin 4 + 6
- 3. 2 x S.P.S.T. - N/O, Pin 3+4+8
- A. Customized

## Protection

- 1. IP X2
- 2. IP X7
- A. Customized

## Cordset with 9 pin SUB D socket

- 1. 5m grey
- 2. 10m grey
- A. Customized



# KBS 01

- Bellows switch, Silikon
- Long-lasting
- 41mm diameter

## Base

- Black RAL 9017  
fitted with 2pcs. M4 inserts.  
Max. tap-depth 4mm

A. Customized

## Bellow Top

- Black RAL 9017
  - Grey RAL 7035
- A. Customized

## Norms

- A. Customized  
Z. No Norm

**KBS01.** Z             Z

## Switching action

- S.P.S.T. - N/O, 0,1 A / 24 VDC

A. Customized

## Protection

- IP X2
  - IP X7
- A. Customized

## Accessories

- A. Customized  
Z. No accessories

Part-No.

## Cordset

- 2m length PVC grey, 2x0,25mm<sup>2</sup>
  - 3m length PVC grey, 2x0,25mm<sup>2</sup>
- A. Customized



# KBS 02

- Bellows switch, Silikon
- Long lasting
- 54 mm Diameter

## Base

- 1. Black RAL 9017  
fitted with 2pcs. M4 inserts.  
Max. tap-depth 5mm

## Bellow Top

- 1. Black RAL 9017
- 2. Grey RAL 7035
- A. Customized

## Norms

- A. Customized
- Z. No Norm

A. Customized

**KBS02.** Z             Z

## Switching Action

- 1. S.P.S.T. - N/O, 0,1 A / 24 VDC
- 2. S.P.S.T. - N/C 0,1 A / 24 VDC
- 3. S.P.S.T. - C/O, 0,1 A / 24 VDC
- 4. S.P.S.T. - N/O 3A / 24 VDC
- 5. S.P.S.T. - N/C 3A / 24 VDC
- 6. S.P.S.T. - C/O, 3A / 24 VDC
- A. Customized

## Protection

- 1. IP X2
- 2. IP X7
- A. Customized

## Accessories

Part-No.

- A. Customized
- Z. No accessories

## Cordset

- 1. 1m length PVC grey, 2x0,25mm<sup>2</sup>
- 2. 2m length PVC grey, 2x0,25mm<sup>2</sup>
- 3. 2m length PVC grey, 3x0,25mm<sup>2</sup>
- A. Customized